



Missouri State Volleyball Game Notes

Rick Kindhart, Director of Athletics Communications
Ben Adamson, Assistant Director, Volleyball Contact
Eric Doennig, Assistant Director
901 S. National Ave., Springfield, MO 65897
Phone (417) 836-5402
www.MissouriStateBears.com

ATHLETICS COMMUNICATIONS

2016 MISSOURI STATE SCHEDULE (16-7 Overall, 7-2 MVC)

August

Illini Classic

26 Fri.	vs. Xavier	L, 2-3
27 Sat.	vs. Arkansas	W, 3-0
27 Sat.	at #14 Illinois	W, 3-2

September

Hawaiian Airlines Wahine Volleyball Classic

1 Thu.	at #15 Hawai'i	L, 0-3
2 Fri.	vs. #8 UCLA	L, 1-3
3 Sat.	vs. Pacific	W, 3-0

Dr. Mary Jo Wynn Invitational

8 Thu.	McNeese State (ESPN3)	W, 3-0
9 Fri.	#12 Ohio State (ESPN3)	W, 3-2
10 Sat.	Western Illinois (ESPN3)	W, 3-0
10 Sat.	IUPUI (ESPN3)	W, 3-1
13 Wed.	at Arkansas State	W, 3-1

Marquette Invitational

16 Fri.	vs. Milwaukee	W, 3-0
17 Sat.	vs. Iowa State	L, 0-3
17 Sat.	at Marquette	L, 1-3
23 Fri.	Wichita State* (ESPN3)	L, 2-3
26 Mon.	Southern Illinois* (ESPN3)	L, 2-3
30 Fri.	at UNI* (ESPN3)	W, 3-2

October

1 Sat.	at Drake* (ESPN3)	W, 3-2
7 Fri.	Bradley* (ESPN3)	W, 3-0
8 Sat.	Loyola* (ESPN3)	W, 3-0
10 Mon.	Evansville* (ESPN3)	W, 3-0
14 Fri.	at Illinois State* (ESPN3)	W, 3-2
15 Sat.	at Indiana State* (ESPN3)	W, 3-0
21 Fri.	at Wichita State* (ESPN3)	7 p.m.
28 Fri.	Drake* (ESPN3)	7 p.m.
29 Sat.	UNI*	7 p.m.

November

5 Sat.	at Bradley* (ESPN3)	7 p.m.
6 Sun.	at Loyola* (ESPN3)	7 p.m.
11 Fri.	Indiana State*	7 p.m.
12 Sat.	Illinois State* (ESPN3)	7 p.m.
18 Fri.	at Evansville* (ESPN3)	7 p.m.
19 Sat.	at Southern Illinois* (ESPN3)	7 p.m.

MVC Tournament

24 Thu.	TBD (ESPN3)	5/7:30 p.m.
25 Fri.	TBD (ESPN3)	5/7:30 p.m.
26 Sat.	TBD (ESPN3)	4 p.m.

(*) MVC match; **Bold** home matches; all times are Springfield times; MVC Tournament will be in Cedar Falls, Iowa. ESPN3 indicates that match will be carried live on ESPN3. The Valley on ESPN3 is available for free at www.WatchESPN.com or on the WatchESPN App.

BEARS BEGIN ROUND TWO OF MVC PLAY AT WICHITA STATE



Missouri State BEARS	
• Record	16-7
• MVC	7-2
• NCAA RPI	63
• AVCA Rank	NR
• Prep Volleyball Rank	40
• Kills Leader	Lily Johnson (4.35/set)
• Digs Leader	Emily Butters (4.06/set)

Opponents:

Wichita State

Friday, October 21, 7 p.m.

Location:

Wichita, Kan.

Site:

Koch Arena

Live Stats:

www.GoShockers.com

Live Video:

ESPN3.com and WatchESPN app

Missouri State (16-7, 7-2 Missouri Valley Conference) begins the second half of the MVC schedule Friday with a 7 p.m. match at league-leading Wichita State (15-5, 8-1). The Bears own a winning record at the midway point of the MVC slate for the 18th consecutive season, and carry a seven-match winning streak into Wichita.

MSU is holding opponents to a .144 attack efficiency during its current win streak, while Lily Johnson is averaging 5.19 kills per set on .284 hitting.

The Shockers won a 3-2 decision in the season's first meeting between the schools on Sept. 23 in Springfield.

THE OPPONENT

Wichita State is 15-5 on the year and sits atop the MVC standings at 8-1. Jody Larson leads the Shockers with 3.34 kills and 3.30 digs per set, while preseason all-MVC middle blocker Abbie Lehman hits .410 and setter Emily Heibert directs the offense to a .299 attack efficiency. As a team, WSU holds the opposition to a .196 hitting percentage and averages 14.24 kills, 1.14 aces, 15.87 digs and 1.90 blocks per set.

THE SERIES

Missouri State holds a 45-30 all-time series edge over Wichita State, though WSU has won 24 of the last 33 meetings. Of those 33 matches, 15 have gone the full five sets.

FIRST MEETING THIS SEASON

Wichita State won 3-2 in Springfield on Sept. 23 in the MVC opener for both schools. The Shockers opened the match with a 26-24 win in the first set, and five players had at least 10 kills for WSU. Simone House hit .458 with 13 kills for the Bears, but the Shockers had 12 kills without an error in a victorious fifth set.

LAST WEEK

Missouri State extended its winning streak to seven matches with wins at Illinois State and Indiana State. Friday against the Redbirds, Lily Johnson had 25 kills and the Bears never trailed in the fifth set for a 15-11 win. Saturday, Missouri State hit .394 in cruising to a 3-0 win in Terre Haute.

COACH MELISSA STOKES

Head Coach Melissa Stokes is 454-220 (.674) in her 21st season at Missouri State. She became the MVC's all-time winningest coach in league matches Sept. 30, 2011, when the Bears beat Bradley 3-1 for her 197th conference victory, and won her 400th career match against Miami (Fla.) on Sept. 13, 2014. A native of El Cajon, Calif., Stokes has guided Missouri State to an overall record of 383-164 (.700) and 223-74 (.751) mark in the Missouri Valley Conference since 2000. In 2003, the Bears were the MVC regular-season champions and advanced to the NCAA Tournament for the first time since 1993. MSU made a return trip to the NCAAs in 2005 after winning the MVC Tournament, and advanced to the second round for the first time in program history in

MissouriStateBears.com

Follow your Bears on
@MissouriStBears / @MissouriStateVB



2016 MVC STANDINGS

Team	MVC	Pct. Overall	Pct.
Wichita State	8-1	.889	15-5 .750
Missouri State	7-2	.778	16-7 .696
Southern Illinois	7-2	.776	16-7 .696
UNI	6-3	.667	15-7 .682
Illinois State	5-4	.556	12-9 .571
Loyola	5-4	.556	10-12 .455
Drake	3-5	.375	12-10 .545
Indiana State	2-6	.375	8-12 .400
Bradley	1-7	.125	6-13 .316
Evansville	0-9	.000	4-19 .182

Thru Oct. 18

AROUND THE MVC

Friday, October 14

*Missouri State 3 at Illinois State 2

*UNI 3 at Bradley 0

*Wichita State 3 at Indiana State 1

*Loyola 3 vs. Drake 0

Saturday, October 15

*Missouri State 3 at Indiana State 0

*UNI 3 at Loyola 2

*Southern Illinois 3 vs. Evansville 0

*Drake 3 at Bradley 1

Sunday, October 16

*Wichita State 3 at Illinois State 0

Tuesday, October 18

*Loyola 3 vs. Bradley 1

Friday, October 21

*Missouri State at Wichita State, 7

*Evansville at UNI, 7

*Southern Illinois at Drake, 7

*Indiana State at Loyola, 7

*Illinois State at Bradley, 7

Saturday, October 22

*Southern Illinois at UNI, 7

*Indiana State at Bradley, 7

*Illinois State at Loyola, 7

*Evansville at Drake, 7

Friday, October 28

*Drake at Missouri State, 7

*UNI at Wichita State, 7

*Loyola at Southern Illinois, 7

*Illinois State at Indiana State, 6

*Bradley at Evansville, 7



2016 MVC PRESEASON POLL

Team	Total
1. Wichita State (7)	97
2. Missouri State (1)	85
3. Southern Illinois (1)	82
4. UNI (1)	72
5. Illinois State	57
6. Loyola	50
7. Indiana State	41
8. Drake	33
9. Bradley	28
10. Evansville	15

2006. MSU defeated Arkansas before falling to No. 13 Oklahoma in the second round, and has since added postseason bids in 2007, 2008, 2010, 2011 and 2015.

Stokes came to Missouri State from the University of Idaho, where she helped the Vandals to four straight NCAA Tournament berths. As a setter at San Diego State, Stokes played four seasons and helped the Aztecs to two NCAA appearances. Stokes ranked 40th among active Division I coaches total victories and 43rd in win percentage entering 2015. Only four coaches ahead of Stokes on the wins list have coached fewer seasons.

QUICK SETS

• Missouri State has spent three weeks this season in the AVCA Coaches Poll and eight in the PrepVolleyball poll, peaking at 27th and 28th, respectively, on Sept. 12. The Bears are rated 40th in the most recent PrepVolleyball edition.

• Head coach Melissa Stokes is climbing up the all-time MVC coaching lists in a number of categories. Listed below is the 21st-year coach's ranking in those categories. Lists are compiled based on statistics at Valley schools only:

- Third in total victories with 454
- First in MVC victories with 262
- Seventh in win percentage overall (.674) and third among active MVC coaches
- Seventh in win percentage in MVC matches only (.710)

• Missouri State has won at least 20 matches in 16 of the last 17 seasons while posting winning records both overall and in Missouri Valley Conference play for 17 consecutive years.

• Missouri State ranks third all-time among Division I schools with 1,212 victories.

• Missouri State is 47-34 in five-set matches since the beginning of the 2006 season and has rallied from 0-2 deficits to win seven times since then as well.

• MSU is 195-34 since the beginning of 2006 when winning set two.

• Despite only two seniors on the roster, the Bears return the vast majority of their statistical output from last season. In total, MSU brings back 90.6 percent of its kills, 88.7 percent of its points, 79.3 percent of service aces and 69.5 percent of total digs.

2016 AWARDS & HONORS

Aubrey Cheffey

• MVC Freshman of the Week (9/6)

Simone House

• Dr. Mary Jo Wynn Invitational all-tournament

• Marquette Invitational all-tournament

Lily Johnson

• Preseason all-MVC

• Illini Classic all-tournament

• MVC Player of the Week (8/29)

• MVC Player of the Week (10/3)

• MVC Scholar-Athlete of the Week (8/30)

• MVC Scholar-Athlete of the Week (10/3)

• Wahine Volleyball Classic all-tournament

• Dr. Mary Jo Wynn Invitational all-tournament

• HERO Sports HERO of the Week (10/7)

Daniele Messa

• MVC Freshman of the Week (9/12)

• MVC Freshman of the Week (10/10)

• MVC Freshman of the Week (10/17)

Lynsey Wright

• Illini Classic all-tournament

• Dr. Mary Jo Wynn Invitational MVC

• MVC Player of the Week (9/12)

• HERO Sports HERO of the Week (9/16)

2016 MISSOURI STATE ROSTER

No.	Numerical	Pos.	Ht.	Yr.	Hometown-High School
1	Brianne Dixon	DS	5-7	Jr.	Springfield, Mo. (Kickapoo High)
2	Julia Hanson	OH/DS	6-0	Fr.	Fort Atkinson, Wis. (Fort Atkinson High)
5	Lynsey Wright	MB	6-0	Jr.	Glen Carbon, Ill. (Edwardsville High)
6	Lauren Boone	S	6-1	Jr.	Branson, Mo. (Branson High)
7	Laynie Dake	MB	6-2	Fr.	Mount Vernon, Mo. (Mount Vernon High)
8	Emily Butters	L	5-8	So.	Richmond, Texas (Travis High)
9	Simone House	MB	6-3	Sr.	Oshkosh, Wis. (North High)
10	Aubrey Cheffey	OH	6-2	Fr.	Nixa, Mo. (Nixa High)
11	Ashley Ophoven	OH	6-1	So.	Ozark, Mo. (Ozark High)
12	Caroline Finnell	RS	6-1	So.	Chesterfield, Mo. (Marquette High)
13	Gerri Idos	DS	5-1	Fr.	Springfield, Mo. (Kickapoo High)
14	MacKenzie Irwin	MB	6-1	So.	Joplin, Mo. (Carl Junction High)
15	Tatum Marshall	DS/L	5-7	Sr.	Fayetteville, Ark. (Fayetteville High)
17	Lily Johnson	OH	5-11	Jr.	Wildwood, Mo. (Lafayette High)
19	Mikaela Mosquera	MB	6-1	So.	West Chicago, Ill. (St. Charles East High)
21	Paige Perry	OH/DS	5-9	Fr.	Ozark, Mo. (Ozark High)
22	Daniele Messa	S	5-7	Fr.	Bartlett, Ill. (St. Francis High)
23	Cambree Villarreal	OH	6-2	So.	Amarillo, Texas (Amarillo High)

Head Coach: Melissa Stokes (San Diego State, 1991), 21st year

Assistant Coach: Jake Barreau (Wisconsin, 2013), 3rd year

Assistant Coach: Kevin Dunn (Lindenwood, 2008), 2nd year

Graduate Assistant: Karen Rivatto (Missouri State, 2014), 2nd year

Pronunciations: Barreau (Buh-ROO), Cheffey (CHEFF-ee), Finnell (Fih-NELL), Idos (EE-dose), Ophoven (OP-hoe-vin), Mikaela (Mih-KAY-luh), Mosquera (Moss-CARE-uh), Cambree (CAMM-bree), Villarreal (VILL-uh-ray-all)

2016 DOUBLE-DOUBLES

Player.....	K-D	K-A	K-B	A-D	Total
Lily Johnson.....	16	0	0	0	15
Daniele Messa.....	0	0	0	9	9
Total	16	0	0	9	24

CAREER DOUBLE-DOUBLES

Player.....	K-D	K-A	K-B	A-D	Total
Lauren Boone.....	0	0	0	1	1
Lily Johnson.....	50	0	0	0	50
Daniele Messa.....	0	0	0	9	9
Total	50	0	0	10	60

2016 DOUBLE-FIGURE MATCHES

Player.....	K	D	A	B
Lauren Boone.....	0	0	5	0
Emily Butters.....	0	21	0	0
Aubrey Cheffey.....	3	0	0	0
Brianne Dixon.....	0	7	0	0
Simone House.....	7	0	0	0
Lily Johnson.....	23	16	0	0
Tatum Marshall.....	0	7	0	0
Daniele Messa.....	0	9	18	0
Ashley Ophoven.....	4	0	0	0
Cambree Villarreal.....	1	0	0	0
Lynsey Wright.....	12	0	0	0
Total	50	59	23	0

CAREER DOUBLE-FIGURE MATCHES

Player.....	K	D	A	B
Lauren Boone.....	2	1	5	0
Emily Butters.....	0	50	0	0
Aubrey Cheffey.....	3	0	0	0
Brianne Dixon.....	0	11	0	0
Simone House.....	17	0	0	0
Lily Johnson.....	84	53	0	0
Tatum Marshall.....	0	37	0	0
Daniele Messa.....	0	9	18	0
Ashley Ophoven.....	12	0	0	0
Cambree Villarreal.....	1	0	0	0
Lynsey Wright.....	43	0	0	0
Total	162	161	23	0

ALL-TIME WINNINGEST DIVISION I WOMEN'S VOLLEYBALL PROGRAMS

Rank	School	Wins
1.	Nebraska	1,261
2.	UCLA	1,256
3.	Missouri State	1,212
4.	Brigham Young	1,208
5.	Penn State	1,205
6.	Long Beach State	1,197
7.	Hawai'i	1,193
8.	Texas	1,174
9.	Minnesota	1,136
10.	Portland State	1,105

Through Oct. 16, 2016 - Min. 10 years in DI



IMPRESSIVE RESUME

Missouri State played one of the nation's toughest non-conference schedules in 2016, with seven matches against NCAA Tournament teams from 2015 before adding six more during the MVC season.

The Bears currently own two victories against teams ranked in the AVCA's top 15 - No. 14 Illinois on Aug. 27 and 12th-ranked Ohio State on Sept. 9 - and have played four such teams this season.

Missouri State has four total victories against teams that played in the NCAA Tournament last year.

Two of MSU's seven losses have come against teams ranked 15th or higher at the time, and four more are against 2015 NCAA clubs.

MVC WEEKLY AWARD WINNERS

The Bears have picked up six MVC weekly awards so far this season. Lily Johnson was honored as the league's Player of the Week and Scholar-Athlete of the Week after the season's opening weekend. She averaged 3.92 kills, 3.00 digs, 0.31 aces and 0.31 blocks as the Bears defeated Arkansas and No. 14 Illinois.

Aubrey Cheffey was the Freshman of the Week on Sept. 6 after hitting .410 in three matches in Hawai'i, averaging 2.11 kills and 1.00 blocks per set with a .487 kill percentage against 15th-ranked Hawai'i, No. 8 UCLA and Pacific.

Lynsey Wright was the Player of the Week on Sept. 12 after averaging of 4.08 kills, 4.65 points, 0.62 blocks, 0.23 aces and 0.62 digs per set as the MVP of the Dr. Mary Jo Wynn Invitational. Wright had 20 kills and six blocks in MSU's win against No. 12 Ohio State.

Daniele Messa picked up top freshman honors the same week, with averages of 10.73 assists while helping the Bears to a .255 hitting percentage. She posted double-doubles against 12th-ranked Ohio State and IUPUI.

Johnson won MVC Player of the Week for a second time on Oct. 3 after posting three consecutive matches with at least 25 kills, including a career-high 33 on .368 hitting at Drake. She added MVC Scholar-Athlete of the Week a day later.

Messa grabbed her second freshman honor on Oct. 10 after averaging 11.17 assists, 0.83 blocks, 2.67 digs and 0.67 kills per set while leading the Bears to a .315 team hitting efficiency in sweeps of Bradley and Loyola.

Messa made it two weeks in a row on Oct. 17 after she averaged 12 assists and 2.91 digs per set while running an MSU offense that averaged 14.64 kills per set on .301 hitting in wins over Evansville, Illinois State and Indiana State.

SIX IS THE MAGIC NUMBER

The number six has been a milestone number the last 18-plus seasons in terms of winning streaks, as the Bears have strung together at least six consecutive wins a total of 22 times since the beginning of the 1999 season. MSU had a seven-match winning

2016 MISSOURI STATE SINGLE MATCH HIGHS

Missouri State Individual	Team
Kills	33, Lily Johnson at Drake, 10/1 68 at Drake, 10/1 68 at Illinois State, 10/14 197 at Illinois State, 10/14 .396 vs. Loyola, 10/8
Attacks	75, Lily Johnson vs. Southern Illinois, 9/26
Hitting Pct.	.714, Lynsey Wright at Indiana State, 10/15
Points	35, Lily Johnson at Drake, 10/1
Assists	54, Daniele Messa vs. IUPUI, 9/10 64 at Drake, 10/1 54, Daniele Messa at Drake, 10/1 54, Daniele Messa at Illinois State, 10/14
Aces	3, by four players on nine occasions 9 vs. Western Illinois, 9/10
Digs	25, Emily Butters vs. #8 UCLA, 9/2 89 vs. #12 Ohio State, 9/9
Block Solos	3, Simone House vs. Bradley, 10/7 5 at UNI, 9/30
Block Asst.	6, Simone House vs. Milwaukee, 9/16 18 vs. #12 Ohio State, 9/9
Total Blocks	7, Simone House vs. Milwaukee, 9/16 12 vs. Bradley, 10/7 7, Simone House vs. Bradley, 10/7
Opponent Individual	Team
Kills	28, Taylor Louis, Marquette, 9/17 68, Xavier, 8/26 68, Wichita State, 9/23 202, #12 Ohio State, 9/9 .312, #15 Hawai'i, 9/1
Attacks	65, Taylor Louis, Marquette, 9/17
Hitting Pct.	.583, Naya Crittenden, #14 Illinois, 8/27
Points	29.5, Taylor Louis, Marquette, 9/17
Assists	50, Jordyn Poulter, #14 Illinois, 8/27
Aces	4, Jaelyn Keene, Illinois State, 10/14
Digs	29, Kendyl Sorge, UNI, 9/30
Block Solos	1, by 20 players on 20 occasions
Block Asst.	8, by two players
Total Blocks	8, by two players 61, Xavier, 8/26 6, on three occasions 93, #12 Ohio State, 9/9 4, #12 Ohio State, 9/9 28, #14 Illinois, 8/27 16, #14 Illinois, 8/27

MSU INDIVIDUAL MVC RANKINGS THRU 10/18 (OVERALL)

Category	Player	Rank	Stat
Hitting %	Simone House	10	.301
Kills/Set	Lily Johnson	1	4.48
Assists/Set	Daniele Messa	4	9.62
Aces/Set	Lily Johnson	2	0.36
Digs/Set	Emily Butters	5	4.06
Points/Set	Lily Johnson	1	5.04

MSU TEAM MVC RANKINGS THRU 10/18 (OVERALL)

Category	Rank (of 10)	Stat
Hitting %	4	.230
Opponent hitting %	3	.190
Assists/set	4	12.42
Kills/set	5	13.17
Blocks/set	10	1.66
Aces/set	7	1.10
Digs/set	6	15.47

MSU INDIVIDUAL NCAA RANKINGS THRU 10/16

Category	Player	Rank	Stat
Aces/Set	Lily Johnson	101	0.36
Assists/Set	Daniele Messa	109	9.62
Attacks/Set	Lily Johnson	7	12.55
Kills/Set	Lily Johnson	12	4.48
Points/Set	Lily Johnson	15	5.05
Total Aces	Lily Johnson	22	32
Total Assists	Daniele Messa	37	808
Total Attacks	Lily Johnson	2	1,117
Total Blocks	Simone House	136	76
Total Digs	Emily Butters	61	361
Total Kills	Lily Johnson	7	399
Total Points	Lily Johnson	7	449.5

MSU TEAM NCAA RANKINGS THRU 10/16

Category	Rank (of 329)	Stat
Aces/set	240	1.10
Assists/set	83	12.42
Blocks/set	269	1.66
Digs/set	101	15.47
Hitting %	94	.230
Kills/set	101	13.17
Winning %	75	.696
Opponent Hitting %	118	.190
Total Assists	5	1,105
Total Digs	24	1,377
Total Kills	5	1,172
Total Aces	135	98
Total Attacks	20	3,136
Total Blocks	184	148.0

NCAA ACTIVE LEADERS THRU 10/16

Category	Player	Rank	Stat
Kills	Lily Johnson	6	1,514
	Lynsey Wright	186	814
Kills/Set	Lily Johnson	4	4.35
Attacks/Set	Lily Johnson	4	12.31
Total Attacks	Lily Johnson	5	4,285
Sets Played	Tatum Marshall	57	424

MISSOURI STATE SEASON LEADERS

SEASON KILLS

1. Michelle Witzke (1997)	667
2. Lily Johnson (2015)	620
3. Michelle Witzke (1996)	581
4. Amanda Omar (1998)	515
5. Maureen Manda (1982)	510
6. Joleen Meservy (1997)	503
7. Lily Johnson (2014)	495
8. Amanda Omar (1999)	485
9. Joleen Meservy (1999)	470
10. Katie Werges (2005)	466

SEASON DIGS

1. Cara Hackmann (2009)	671
2. Adeana McAfee (2006)	653
3. Terri Del Conte (2008)	605
4. Jane Parker (2004)	596
5. Emily Butters (2015)	568
6. Ashley Mason (2013)	559
7. Maddy Hogan (2014)	547
8. Adeana McAfee (2005)	544
9. Ashley Mason (2012)	542
10. Ashley Mason (2011)	523

streak from Sept. 3-16 this season, and began another seven-match streak on Sept. 30.

HOMECOMING

Missouri State has been dominant at home since 2000, compiling a record of 183-45 for an .803 winning percentage at Hammons Student Center.

The Bears are 7-2 in 2016 and have won at least 64 percent of their home matches in 16 consecutive seasons.

LOCAL FLAVOR

Missouri State boasts two players from Springfield on its 2016 roster (Brienne Dixon and Gerri Idos from Kickapoo High) and a total of eight players from southwest Missouri, including Lauren Boone (Branson), MacKenzie Irwin (Joplin), Laynie Dake (Mount Vernon), Ashley Ophoven and Paige Perry (Ozark), and Aubrey Cheffey (Nixa). In all, 10 of MSU's 18 players hail from the Show-Me State.

PRESEASON ALL-CONFERENCE

Junior outside hitter Lily Johnson was voted the preseason all-conference team in 2016. Johnson is the reigning MVC Player of the Year and the only two-time All-American in MSU history.

FOLLOW THE BEARS

Follow the Bears all season long on Missouri State's official athletics website, MissouriStateBears.com, and get a behind-the-scenes look at the program on the team's Facebook (missouristatevb), Twitter (@MissouriStateVB) and Instagram (missouristatevolleyball) pages.

THE VALLEY ON ESPN3

The Valley on ESPN3, part of the Missouri Valley Conference's media rights agreement with ESPN, will feature most home volleyball matches from all 10 MVC institutions on the ESPN3 streaming platform. The HD-quality telecasts are available for free at www.WatchESPN.com or on the WatchESPN App.

MISSOURI STATE SEASON LEADERS

SEASON KILLS PER SET

1. Michelle Witzke (1997)	5.70
2. Michelle Witzke (1996)	5.19
3. Joleen Meservy (1997)	4.88
4. Lily Johnson (2015)	4.59
5. Amanda Omar (1998)	4.36
6. Kathy Crotty (1985)	4.22
7. Katie Werges (2005)	4.12
8. Lily Johnson (2014)	3.992
9. Joleen Meservy (1998)	3.991
10. Erin Murphy (2002)	3.91

MISSOURI STATE CAREER LEADERS

CAREER 20-KILL MATCHES*

1. Michelle Witzke (94-97)	38
2. Lily Johnson (14-pr.)	30
3. Joleen Meservy (96-99)	22
4. Amanda Omar (98-99)	16
5. Erin O'Connor (03-06)	7
Vanessa Wouters (94-95)	7
7. Katie Werges (02-05)	6
8. Olivia Brand (11-14)	5
Erin Murphy (00-03)	5
Rese McNatt (99-01)	5
11. Three tied at	4

CONSECUTIVE MATCHES WITH 10+ KILLS

1. Lily Johnson (10/14-10/15)	36
2. Lily Johnson (11/15-pr.)	34
3. Michelle Witzke (11/95-11/96)	23
4. Michelle Witzke (9/97-11/97)	20
Amanda Omar (10/98-9/99)	17
6. Joleen Meservy (10/99-11/99)	15
Michelle Witzke (11/96-9/97)	15
8. Michelle Witzke (9/95-10/95)	10
Jamie Adams (9/07-10/07)	10
10. Lily Johnson (9/14) and 4 others	9

CAREER KILLS

1. Michelle Witzke (94-97)	1919
2. Kathy Crotty (83-86)	1570
3. Lily Johnson (14-pr.)	1514
4. Joleen Meservy (96-99)	1513
5. Jennifer Seveland Box (79-82)	1444
6. Erin Murphy (00-03)	1432
7. Maureen Manda (81-84)	1400
8. Mary Beck (81-84)	1280
9. Erin O'Connor (03-06)	1244
10. Katie Werges (02-05)	1240

CAREER KILLS PER SET

1. Michelle Witzke (94-97)	4.55
2. Lily Johnson (14-pr.)	4.35
3. Amanda Omar (98-99)	4.12
4. Joleen Meservy (96-99)	3.94
5. Kathy Crotty (83-86)	3.33
6. Erin Murphy (00-03)	3.31
7. Katie Werges (02-05)	3.16
8. Erin O'Connor (03-06)	3.11
9. Linette White (00-03)	3.08
10. Maureen Manda (81-84)	2.94

CAREER ATTACKS

1. Michelle Witzke (94-97)	4944
2. Lily Johnson (14-pr.)	4285
3. Erin Murphy (00-03)	3919
4. Kathy Crotty (83-86)	3720
5. Joleen Meservy (96-99)	3697
6. Erin O'Connor (03-06)	3664
7. Katie Werges (02-05)	3335
8. Jennifer Seveland Box (79-82)	3288
9. Maureen Manda (81-84)	3157
10. Christine McCartney (10-13)	3151

CAREER HITTING PERCENTAGE

1. Linette White (00-03)352
2. Sabrina Apker (02-05)338
3. Jennifer Seveland Box306
4. Simone House (13-pr.)304
5. Kelley Michnowicz (08-11)2994
6. Casey Young (99-02)2990
7. Calli Norman (08-11)2987
8. Maureen Manda (81-84)29268
9. Chenille Bayless (00-03)29266
10. Kaitlin Jaeger (11-13)289

*Match-by-match records date through 1987

2016 Missouri State Season Results (16-7, 7-2 MVC)

Date	Site	Att.	Opponent	W/L	Scores	Record	Kill Leader	Dig Leader
8/26	Neutral	2805	Xavier&	L	25-18, 25-23, 23-25, 17-25, 14-16	0-1	Johnson - 20	Butters - 17
8/27	Neutral	--	Arkansas&	W	25-16, 25-19, 29-27	1-1	Johnson - 14	Johnson - 16
8/27	Away	2544	#14 Illinois&	W	25-22, 14-25, 25-22, 15-25, 15-10	2-1	Johnson/Ophoven - 17	Butters - 12
9/1	Away	5604	#15 Hawai'i@	L	16-25, 22-25, 22-25	2-2	Johnson - 12	Butters - 12
9/2	Neutral	--	#8 UCLA@	L	25-21, 16-25, 18-25, 15-25	2-3	Johnson - 18	Butters - 25
9/3	Neutral	--	Pacific@	W	25-14, 25-23, 25-19	3-3	Cheffey - 11	Butters - 17
9/8	Home	934	McNeese State^	W	25-17, 25-17, 25-15	4-3	Johnson - 17	Johnson - 14
9/9	Home	1017	#12 Ohio State^	W	21-25, 25-23, 25-21, 22-25, 15-12	5-3	Wright - 20	Butters - 23
9/10	Home	515	Western Illinois^	W	25-9, 25-15, 25-18	6-3	Johnson - 12	Butters - 14
9/10	Home	803	IUPUI^	W	25-14, 25-23, 18-25, 25-20	7-3	Johnson - 20	Butters/Johnson - 18
9/13	Away	287	Arkansas State	W	25-23, 19-25, 25-22, 25-20	8-3	Johnson - 19	Butters - 16
9/16	Neutral	--	Milwaukee#	W	25-15, 25-20, 26-24	9-3	Johnson - 15	Butters/Messa - 11
9/17	Neutral	--	Iowa State#	L	12-25, 21-25, 22-25	9-4	Johnson - 10	Johnson/Messa - 9
9/17	Away	548	Marquette#	L	25-21, 18-25, 13-25, 23-25	9-5	Johnson - 17	Johnson - 21
9/23	Home	1141	Wichita State*	L	24-26, 25-20, 12-25, 25-21, 10-15	9-6, 0-1	Johnson - 18	Butters - 18
9/26	Home	902	Southern Illinois*	L	25-13, 16-25, 25-23, 19-25, 13-15	9-7, 0-2	Johnson - 25	Butters - 22
9/30	Away	3155	UNI*	W	26-24, 25-21, 20-25, 19-25, 15-13	10-7, 1-2	Johnson - 25	Messa - 19
10/1	Away	442	Drake*	W	23-25, 25-18, 25-17, 18-25, 15-10	11-7, 2-2	Johnson - 33	Messa - 20
10/7	Home	878	Bradley*	W	25-14, 25-19, 25-17	12-7, 3-2	Johnson/Wright - 12	Butters - 21
10/8	Home	606	Loyola*	W	25-14, 25-16, 25-14	13-7, 4-2	Johnson - 16	Johnson - 11
10/10	Home	501	Evansville*	W	25-10, 25-12, 25-15	14-7, 5-2	Johnson - 14	Butters - 12
10/14	Away	821	Illinois State*	W	20-25, 25-19, 18-25, 25-20, 15-11	15-7, 6-2	Johnson - 25	Butters - 22
10/15	Away	233	Indiana State*	W	25-18, 25-20, 25-15	16-7, 7-2	Johnson - 15	Butters - 10
10/21	Away		Wichita State*					
10/28	Home		Drake*					
10/29	Home		UNI*					
11/5	Away		Bradley*					
11/6	Away		Loyola*					
11/11	Home		Indiana State*					
11/12	Home		Illinois State*					
11/18	Away		Evansville*					
11/19	Away		Southern Illinois*					

* Missouri Valley Conference matches; # - indicates AVCA ranking at time the match was played; & - Illini Classic in Champaign, Ill.; @ - Hawaiian Airlines Wahine Volleyball Classic; ^ Dr. Mary Jo Wynn Invitational in Springfield, Mo.; #Marquette Invitational in Milwaukee, Wis.; % - MVC Tournament in Cedar Falls, Iowa

2016 Missouri State Miscellaneous Statistics

Double-Figure Kill Matches (50): Johnson 23, Wright 12, House 7, Ophoven 4, Cheffey 3, Villarreal 1; **Opponents-** 41

20-Kill Matches (6): Johnson 5, Wright 1; **Opponents-** 6

25-Kill Matches (4): Johnson 4; **Opponents-** 2

30-Kill Matches (1): Johnson 1; **Opponents-** 0

Double-Figure Dig Matches (59): Butters 19, Johnson 15, Marshall 7, Messa 7, Dixon 6; **Opponents-** 55

20-Dig Matches (7): Butters 5, Johnson 1, Messa 1; **Opponents-** 9

25-Dig Matches (1): Butters 1; **Opponents-** 2

30-Dig Matches (0): **Opponents-** 0

35-Dig Matches (0): **Opponents-** 0

40-Dig Matches (0): **Opponents-** 0

Double-Figure Block Matches (0): **Opponents-** 0

Double-Figure Kill-Dig Matches (16): Johnson 16; **Opponents-** 13

20-Kill, 20-Dig Matches (0): **Opponents-** 0

Double-Figure Kill-Block Matches (0): **Opponents-** 0

Double-Figure Kill-Block-Dig Matches (0): **Opponents-** 0

Double-Figure Kill-Dig-Assist Matches (0): **Opponents-** 0

Matches Leading MSU in Kills: Johnson 21, Wright 2, Ophoven 1, Cheffey 1

Matches Leading MSU in Digs: Butters 17, Johnson 6, Messa 4

Matches Leading MSU in Blocks: House 14, Wright 10, Cheffey 2, Dake 1, Irwin 1, Messa 1, Villarreal 1

Matches Leading MSU in Aces: Johnson 14, Butters 8, Wright 7, Marshall 7, Dixon 5, Messa 4, Idos 1, Hanson 1

2016 Individual Match-by-Match Statistics

Date	Opponent	Boone K-A-D-B	Butters K-A-D-B	Cheffey K-A-D-B	Dake K-A-D-B	Dixon K-A-D-B	House K-A-D-B	Idos K-A-D-B	Irwin K-A-D-B	Johnson K-A-D-B	Marshall K-A-D-B	Messa K-A-D-B	Mosquera K-A-D-B	Ophoven K-A-D-B	Villarreal K-A-D-B	Wright K-A-D-B
8/26	Xavier	3-40-9-1	0-1-17-0	DNP	DNP	0-0-12-0	4-0-0-4	DNP	5-1-2-2	20-4-13-0	0-0-10-1	0-6-1-0	DNP	4-0-0-1	6-0-2-1	14-0-5-0
8/27	Arkansas	2-32-6-0	0-1-15-0	DNP	3-0-1-2	0-0-8-0	5-2-1-2	DNP	0-0-0-0	14-2-16-2	0-0-5-0	0-1-0-0	2-0-1-0	10-0-1-0	DNP	8-0-1-1
8/27	#14 Illinois	2-25-9-2	0-3-12-0	DNP	2-0-0-0	0-0-6-0	7-0-1-4	DNP	0-0-0-1	17-0-10-1	0-0-0-0	0-27-10-0	3-0-0-0	17-0-4-2	0-0-0-0	11-1-2-0
9/1	#15 Hawai'i	1-9-5-0	0-0-12-0	4-0-0-2	DNP	0-0-5-0	6-1-1-3	DNP	0-0-0-0	12-1-10-0	0-0-3-0	0-23-6-0	1-0-0-1	1-0-1-0	0-0-1-0	11-0-2-1
9/2	#8 UCLA	1-30-9-1	0-3-25-0	4-2-1-2	1-0-0-0	0-0-8-0	4-0-0-2	0-0-1-0	DNP	18-1-13-2	0-0-1-0	0-4-1-0	0-0-0-0	10-0-1-3	DNP	5-0-1-6
9/3	Pacific	DNP	0-1-17-0	11-0-0-5	DNP	1-0-5-0	5-0-0-3	0-0-0-0	DNP	10-0-11-1	0-0-6-0	0-37-8-1	DNP	5-0-1-0	2-0-3-0	6-0-3-5
9/8	McNeese State	1-15-1-1	0-4-13-0	2-0-0-0	0-0-0-0	0-0-7-0	4-0-1-3	0-0-0-0	1-0-0-0	17-0-14-0	0-0-5-0	0-29-6-0	1-0-0-1	6-0-1-0	1-0-0-1	15-0-2-1
9/9	#12 Ohio State	DNP	0-4-23-0	7-0-2-4	DNP	0-1-14-0	13-0-0-5	0-0-3-0	DNP	15-0-18-1	0-0-14-0	1-48-11-2	DNP	0-0-0-0	3-0-1-2	20-0-3-6
9/10	Western Illinois	4-8-5-1	0-2-14-0	1-0-1-0	1-0-0-1	0-0-1-0	4-0-0-1	0-0-1-0	6-0-1-3	12-0-4-0	0-0-1-0	0-30-8-0	1-0-0-2	4-0-2-0	DNP	6-0-0-0
9/10	IUPUI	1-4-2-1	0-2-18-0	5-0-0-0	DNP	0-0-12-0	10-0-1-3	0-0-0-0	0-0-0-0	20-0-18-0	0-0-11-0	0-54-10-1	DNP	1-0-0-0	13-0-5-1	12-0-3-1
9/13	Arkansas State	0-5-1-1	0-0-16-0	0-0-0-1	0-0-0-1	0-2-3-0	10-0-3-6	0-0-0-0	1-0-0-0	19-0-8-1	0-0-12-0	2-42-6-0	1-0-0-3	10-0-1-1	0-0-0-0	8-0-0-2
9/16	Milwaukee	1-0-1-0	0-3-11-0	DNP	2-0-0-0	0-0-10-0	7-0-2-7	0-0-0-0	DNP	15-0-8-3	0-2-8-0	2-44-11-3	DNP	7-0-1-0	6-0-0-0	8-0-2-2
9/17	Iowa State	0-3-0-1	0-1-5-0	2-0-4-3	DNP	0-0-4-0	9-0-1-3	0-0-0-0	DNP	10-0-9-0	0-0-8-0	0-24-9-0	0-0-0-0	2-0-0-1	1-0-0-1	6-0-0-4
9/17	Marquette	DNP	0-2-17-0	7-0-2-1	0-0-0-0	1-0-9-0	14-1-2-3	0-0-0-0	0-0-0-0	17-0-21-0	0-0-4-0	0-44-7-1	1-0-0-1	3-0-0-0	2-0-2-0	4-0-0-3
9/23	Wichita State*	2-12-0-0	0-1-18-0	4-0-0-0	DNP	0-0-8-0	13-0-0-6	0-0-1-0	0-0-0-0	18-3-13-4	0-0-17-0	0-39-6-0	5-0-4-1	1-0-1-0	0-0-0-0	14-0-2-0
9/26	Southern Illinois*	9-4-3-2	0-4-22-0	10-0-2-0	DNP	0-0-9-0	7-0-2-3	0-1-0-0	DNP	25-1-5-0	0-0-10-0	1-53-12-3	0-0-1-0	3-0-0-0	DNP	10-0-0-2
9/30	UNI*	5-1-2-0	0-4-17-0	1-0-0-1	DNP	0-2-10-0	11-1-0-2	0-0-2-0	DNP	25-0-11-2	0-0-11-0	4-50-19-1	DNP	7-0-4-1	6-0-0-0	8-0-3-4
10/1	Drake*	7-0-6-3	0-8-17-0	12-0-0-1	DNP	0-1-8-0	6-0-2-5	0-0-1-0	3-0-0-5	33-1-8-2	1-0-9-0	3-54-20-2	DNP	1-0-0-1	2-0-0-1	0-0-0-1
10/7	Bradley*	2-0-0-1	0-2-21-0	3-0-0-1	DNP	0-1-5-0	9-0-1-7	0-1-1-0	0-0-0-0	12-1-11-4	1-1-5-0	2-32-11-3	DNP	0-0-1-0	DNP	12-0-0-3
10/8	Loyola*	3-0-2-0	0-2-7-0	DNP	DNP	0-0-10-0	6-0-2-1	0-0-1-0	DNP	16-1-11-2	0-1-2-0	2-35-5-2	DNP	DNP	5-0-3-0	12-2-1-3
10/10	Evansville*	1-0-2-0	0-4-12-0	1-2-1-1	DNP	0-0-5-0	10-0-3-1	0-0-5-0	4-0-1-0	14-1-10-0	DNP	1-37-8-0	1-0-0-0	5-0-0-0	4-0-0-1	1-0-2-1
10/14	Illinois State*	6-1-4-0	0-6-22-0	0-1-1-0	DNP	0-1-16-0	6-0-2-2	0-0-0-0	1-0-0-0	25-0-12-2	0-0-4-0	2-54-15-1	DNP	1-0-0-0	11-0-1-1	16-0-3-3
10/15	Indiana State*	8-1-1-0	1-2-10-0	DNP	DNP	0-0-6-0	6-0-0-0	DNP	DNP	15-1-9-3	2-1-3-0	0-41-9-0	DNP	0-0-0-1	5-0-0-0	11-0-1-5
10/21	Wichita State*															
10/28	Drake*															
10/29	UNI*															
11/5	Bradley*															
11/6	Loyola*															
11/11	Indiana State*															
11/12	Illinois State*															
11/18	Evansville*															
11/19	Southern Illinois*															

K-Kills, A-Assists, D-Digs, B-Blocks; DNP-Did Not Play; *-MVC match

Note: Paige Perry has appeared in 10 matches (1 assist, 10 digs); Caroline Finnell has appeared in six matches (8 kills, 2 digs, 2 blocks), Julia Hanson has appeared in four matches (6 digs, 3 aces).

2016 Team Match-by-Match Statistics

Date	Opponent	< Missouri State >									Score	< Opponents >								
		K	E	TA	Pct.	A	SA	SE	Dig	Blk.		K	E	TA	Pct.	A	SA	SE	Dig	Blk.
8/26	Xavier	56	25	167	.186	52	5	9	71	5.0	2-3	68	23	179	.251	61	2	15	80	4.0
8/27	Arkansas	44	21	116	.198	38	4	13	55	4.0	3-0	24	14	105	.095	24	3	14	42	5.0
8/27	#14 Illinois	59	29	156	.192	56	5	8	53	5.0	3-2	61	18	141	.305	59	3	9	58	16.0
9/1	#15 Hawai'i	36	17	111	.171	34	2	6	46	4.0	0-3	46	12	109	.312	44	5	10	51	9.0
9/2	#8 UCLA	43	25	147	.122	40	3	6	61	9.0	1-3	63	18	149	.302	61	1	8	75	8.0
9/3	Pacific	40	12	99	.283	38	3	5	54	8.0	3-0	31	19	111	.108	30	6	12	42	8.0
9/8	McNeese State	48	12	104	.346	48	4	6	50	5.0	3-0	25	16	95	.095	24	0	5	36	4.0
9/9	#12 Ohio State	59	24	182	.192	53	5	8	89	11.0	3-2	66	35	202	.153	60	6	8	93	12.5
9/9	Western Illinois	42	12	87	.345	41	9	5	41	4.0	3-0	22	20	91	.022	22	2	1	31	6.0
9/10	IUPUI	62	23	177	.220	60	4	6	80	4.0	3-1	48	18	150	.200	45	2	6	78	13.0
9/13	Arkansas State	51	22	125	.232	49	4	10	50	9.0	3-1	56	29	149	.181	52	1	6	48	6.0
9/16	Milwaukee	50	14	117	.308	49	3	5	55	9.0	3-0	34	22	119	.101	31	2	1	46	6.0
9/17	Iowa State	30	16	106	.132	28	3	5	40	7.0	0-3	44	13	101	.307	42	4	7	55	4.0
9/17	Marquette	49	25	164	.146	47	4	4	70	5.0	1-3	62	19	160	.269	55	3	6	74	12.0
9/23	Wichita State*	57	23	166	.205	55	3	8	70	7.0	2-3	68	23	177	.254	60	5	9	72	6.0
9/26	Southern Illinois*	65	24	161	.255	63	4	11	66	5.0	2-3	60	20	153	.261	55	3	7	58	13.0
9/30	UNI*	67	30	190	.195	58	5	4	79	8.0	3-2	66	27	188	.207	61	5	4	86	10.0
10/1	Drake*	68	29	175	.223	64	3	7	71	11.0	3-2	52	27	164	.152	49	3	7	65	5.0
10/7	Bradley*	41	14	109	.248	38	2	7	58	12.0	3-0	28	27	117	.009	27	0	4	49	4.0
10/8	Loyola*	44	8	91	.396	41	3	7	45	4.0	3-0	27	19	99	.081	23	1	7	34	0.0
10/10	Evansville*	45	11	90	.378	44	7	4	51	2.0	3-0	20	16	95	.042	17	1	2	28	5.0
10/14	Illinois State*	68	25	197	.218	63	5	3	83	5.0	3-2	64	22	186	.226	59	6	6	87	8.0
10/15	Indiana State*	48	9	99	.394	46	8	7	39	5.0	3-0	30	14	91	.176	26	3	3	34	3.0
10/21	Wichita State*																			
10/28	Drake*																			
10/29	UNI*																			
11/5	Bradley*																			
11/6	Loyola*																			
11/11	Indiana State*																			
11/12	Illinois State*																			
11/18	Evansville*																			
11/19	Southern Illinois*																			

K-Kills, E-Errors, TA-Total Attack Attempts, Pct.-Hitting Percentage, A-Assists, SA-Service Aces, SE-Service Errors, Dig-Digs, Blk.-Blocks, *-MVC match

Season and Career Match Highs

2016 (23 matches) #1 Brianne Dixon..... Career (75 matches)
 1, 9/3/16 vs. Pacific Kills (3 sets) 1, 9/3/16 vs. Pacific
 1, 9/17/16 at Marquette Kills (4 sets) 1, 9/17/16 at Marquette
 NA Kills (5 sets) NA
 16, 10/14/16 at Illinois State Digs 16, 10/14/16 at Illinois State
 2, 9/30/16 at UNI Assists 2, 2x, last 9/30/16 at UNI
 2, 9/13/16 at Arkansas State Aces 2, 9/13/16 at Arkansas State
 NA Blocks NA

2016 (4 matches) #2 Julia Hanson..... Career (4 matches)
 NA Kills (3 sets) NA
 NA Kills (4 sets) NA
 NA Kills (5 sets) NA
 3, 10/14/16 at Illinois State Digs 3, 10/14/16 at Illinois State
 NA Assists NA
 1, 3x, last 10/15/16 at Indiana State Aces 1, 3x, last 10/15/16 at Indiana State
 NA Blocks NA

2016 (23 matches) #5 Lynsey Wright..... Career (85 matches)
 15, 9/8/16 vs. McNeese Kills (3 sets) 15, 2x, last 9/8/16 vs. McNeese
 12, 9/10/16 vs. IUPUI Kills (4 sets) 16, 10/24/14 vs. Bradley
 20, 9/9/16 vs. #12 Ohio State Kills (5 sets) 24, 10/5/15 at Southern Illinois
 5, 8/26/16 vs. Xavier Digs 8, 10/31/15 vs. Wichita State
 2, 10/8/16 vs. Loyola Assists 2, 10/8/16 vs. Loyola
 2, 9/10/16 vs. IUPUI Aces 3, 9/18/15 vs. UMKC
 6, 2x, last 9/9/16 vs. #12 Ohio State Blocks 6, 3x, last 9/9/16 vs. #12 Ohio State

2016 (20 matches) #6 Lauren Boone Career (72 matches)
 8, 10/15/16 at Indiana State Kills (3 sets) 8, 10/15/16 at Indiana State
 1, 2x, last 9/10/16 vs. IUPUI Kills (4 sets) 6, 11/6/15 vs. UNI
 9, 9/26/16 vs. Southern Illinois Kills (5 sets) 12, 10/23/15 at Indiana State
 9, 3x, last 9/2/16 vs. #8 UCLA Digs 11, 11/21/14 at Illinois State
 40, 8/26/16 vs. Xavier Assists 40, 8/26/16 vs. Xavier
 NA Aces NA
 3, 10/1/16 at Drake Blocks 5, 10/17/15 vs. Bradley

2016 (8 matches) #7 Laynie Dake Career (8 matches)
 3, 8/27/16 vs. Arkansas Kills (3 sets) 3, 8/27/16 vs. Arkansas
 1, 9/2/16 vs. #8 UCLA Kills (4 sets) 1, 9/2/16 vs. #8 UCLA
 2, 8/27/16 at #14 Illinois Kills (5 sets) 2, 8/27/16 at #14 Illinois
 1, 8/27/16 vs. Arkansas Digs 1, 8/27/16 vs. Arkansas
 NA Assists NA
 NA Aces NA
 2, 8/27/16 vs. Arkansas Blocks 2, 8/27/16 vs. Arkansas

2016 (23 matches) #8 Emily Butters Career (57 matches)
 1, 10/15/16 at Indiana State Kills (3 sets) 1, 10/15/16 at Indiana State
 NA Kills (4 sets) NA
 NA Kills (5 sets) NA
 25, 9/2/16 vs. #8 UCLA Digs 29, 2x, last 11/28/15 vs. Wichita State
 8, 10/1/16 at Drake Assists 8, 10/1/16 at Drake
 3, 10/15/16 at Indiana State Aces 3, 2x, last 10/15/16 at Indiana State
 NA Blocks NA

2016 (23 matches) #9 Simone House ..Career (104 matches)
 10, 10/10/16 vs. Evansville Kills (3 sets) 11, 4x, last 11/2/15 at Evansville
 14, 9/17/16 at Marquette Kills (4 sets) 14, 9/17/16 at Marquette
 13, 2x, last 9/23/16 vs. Wichita State Kills (5 sets) 18, 9/26/15 vs. Indiana State
 3, 2x, last 10/10/16 vs. Evansville Digs 5, 2x, last 10/3/14 vs. Drake
 2, 8/27/16 vs. Arkansas Assists 2, 2x, last 2, 8/27/16 vs. Arkansas
 NA Aces 5, 11/1/13 at Southern Illinois
 7, 2x, last 10/7/16 vs. Bradley Blocks 8, 9/8/14 at Kansas State

2016 (17 matches) #10 Aubrey Cheffey. Career (17 matches)
 11, 9/3/16 vs. Pacific Kills (3 sets) 11, 9/3/16 vs. Pacific
 7, 9/17/16 at Marquette Kills (4 sets) 7, 9/17/16 at Marquette
 12, 10/1/16 at Drake Kills (5 sets) 12, 10/1/16 at Drake
 4, 9/17/16 vs. Iowa State Digs 4, 9/17/16 vs. Iowa State
 2, 2x, last 10/10/16 vs. Evansville Assists 2, 2x, last 10/10/16 vs. Evansville
 NA Aces NA
 5, 9/3/16 vs. Pacific Blocks 5, 9/3/16 vs. Pacific

2016 (22 matches) #11 Ashley Ophoven..Career (56 matches)
 10, 8/27/16 vs. Arkansas Kills (3 sets) 10, 8/27/16 vs. Arkansas
 10, 2x, last 9/13/16 at Arkansas State Kills (4 sets) 16, 9/5/15 vs. Marquette
 17, 8/27/16 at #14 Illinois Kills (5 sets) 20, 11/28/15 vs. Wichita State
 4, 2x, last 9/30/16 at UNI Digs 5, 2x, last 10/31/15 vs. Wichita State
 NA Assists 2, 10/23/15 at Indiana State
 NA Aces NA
 3, 9/2/16 vs. #8 UCLA Blocks 3, 3x, last 9/2/16 vs. #8 UCLA

2016 (6 matches) #12 Caroline Finnell . Career (18 matches)
 3, 2x, last 10/10/16 vs. Evansville Kills (3 sets) 3, 3x, last 10/10/16 vs. Evansville
 NA Kills (4 sets) 1, 2x, last 12/3/15 vs. #25 Missouri
 NA Kills (5 sets) 1, 2x, last 10/10/15 at UNI
 1, 2x, last 9/16/16 vs. Milwaukee Digs 2, 10/10/15 at UNI
 NA Assists NA
 NA Aces NA
 2, 9/16/16 vs. Milwaukee Blocks 2, 9/16/16 vs. Milwaukee

2016 (18 matches) #13 Gerri Idos Career (18 matches)
 NA Kills (3 sets) NA
 NA Kills (4 sets) NA
 NA Kills (5 sets) NA
 5, 10/10/16 vs. Evansville Digs 5, 10/10/16 vs. Evansville
 1, 2x, last 10/7/16 vs. Bradley Assists 1, 2x, last 10/7/16 vs. Bradley
 3, 9/10/16 vs. Western Illinois Aces 3, 9/10/16 vs. Western Illinois
 NA Blocks NA

2016 (14 matches) #14 MacKenzie Irwin. Career (27 matches)
 6, 9/10/16 vs. Western Illinois Kills (3 sets) 6, 9/10/16 vs. Western Illinois
 NA Kills (4 sets) NA
 5, 8/26/16 vs. Xavier Kills (5 sets) 5, 8/26/16 vs. Xavier
 2, 8/26/16 vs. Xavier Digs 2, 8/26/16 vs. Xavier
 1, 8/26/16 vs. Xavier Assists 1, 8/26/16 vs. Xavier
 NA Aces 4, 10/9/15 at Drake
 5, 10/1/16 at Drake Blocks 5, 10/1/16 at Drake

2016 (22 matches) #15 Tatum Marshall... Career (118 matches)
 2, 10/15/16 at Indiana State Kills (3 sets) 2, 10/15/16 at Indiana State
 NA Kills (4 sets) 1, 9/6/13 vs. St. John's
 1, 10/1/16 at Drake Kills (5 sets) 1, 3x, last 10/1/16 at Drake
 17, 9/23/16 vs. Wichita State Digs 20, 11/21/14 at Illinois State
 2, 9/16/16 vs. Milwaukee Assists 4, 5x, last 9/5/15 vs. Marquette
 3, 8/26/16 vs. Xavier Aces 5, 9/26/14 at Loyola
 NA Blocks NA

2016 (23 matches) #17 Lily Johnson Career (90 matches)
 17, 9/8/16 vs. McNeese Kills (3 sets) 23, 11/13/15 at Bradley
 20, 9/10/16 vs. IUPUI Kills (4 sets) 24, 12/3/15 vs. #25 Missouri
 33, 10/1/16 at Drake Kills (5 sets) 33, 10/1/16 at Drake
 21, 9/17/16 at Marquette Digs 23, 11/21/14 at Illinois State
 4, 8/26/16 vs. Xavier Assists 4, 2x, last 8/26/16 vs. Xavier
 3, 6x, last 10/15/16 at Indiana State Aces 5, 11/15/14 vs. Evansville
 4, 10/7/16 vs. Bradley Blocks 4, 6x, last 10/7/16 vs. Bradley

2016 (12 matches) #19 Mikaela Mosquera. Career (22 matches)
 2, 8/27/16 vs. Arkansas Kills (3 sets) 3, 9/19/15 vs. South Dakota State
 1, 2x, last 9/17/16 at Marquette Kills (4 sets) 1, 2x, last 9/17/16 at Marquette
 5, 9/23/16 vs. Wichita State Kills (5 sets) 5, 9/23/16 vs. Wichita State
 4, 9/23/16 vs. Wichita State Digs 4, 9/23/16 vs. Wichita State
 NA Assists NA
 NA Aces NA
 3, 9/13/16 at Arkansas State Blocks 3, 9/13/16 at Arkansas State

2016 (10 matches) #21 Paige Perry Career (10 matches)
 NA Kills (3 sets) NA
 NA Kills (4 sets) NA
 NA Kills (5 sets) NA
 6, 9/17/16 at Marquette Digs 6, 9/17/16 at Marquette
 1, 9/10/16 vs. Western Illinois Assists 1, 9/10/16 vs. Western Illinois
 1, 9/10/16 vs. Western Illinois Aces 1, 9/10/16 vs. Western Illinois
 NA Blocks NA

2016 (23 matches) #22 Daniele Messa Career (23 matches)
 2, 3x, last 10/8/16 vs. Loyola Kills (3 sets) 2, 3x, last 10/8/16 vs. Loyola
 2, 9/13/16 at Arkansas State Kills (4 sets) 2, 9/13/16 at Arkansas State
 4, 9/30/16 at UNI Kills (5 sets) 4, 9/30/16 at UNI
 20, 10/1/16 at Drake Digs 20, 10/1/16 at Drake
 54, 3x, last 10/14/16 at Illinois State Assists 54, 3x, last 10/14/16 at Illinois State
 2, 8/27/16 at #14 Illinois Aces 2, 8/27/16 at #14 Illinois
 3, 3x, last 10/7/16 vs. Bradley Blocks 3, 3x, last 10/7/16 vs. Bradley

2016 (18 matches) #23 Cambree Villarreal.. Career (35 matches)
 6, 2x, last 9/16/16 vs. Milwaukee Kills (3 sets) 7, 2x, last 9/25/15 vs. Illinois State
 13, 9/10/16 vs. IUPUI Kills (4 sets) 13, 9/10/16 vs. IUPUI
 11, 10/14/16 at Illinois State Kills (5 sets) 11, 10/14/16 at Illinois State
 5, 9/10/16 vs. IUPUI Digs 5, 9/10/16 vs. IUPUI
 NA Assists 1, 2x, last 10/16/15 vs. Loyola
 NA Aces NA
 2, 9/9/16 vs. #12 Ohio State Blocks 2, 4x, last 9/9/16 vs. #12 Ohio State

Player Summaries

#1 Brianne Dixon, 5-7, Jr., DS, Springfield, Mo.

- ▶ MVC Elite 18 Award winner in 2015, given to the player with the highest GPA in the MVC tournament title match
- ▶ Eleven career matches with at least 10 digs

#2 Julia Hanson, 6-0, Fr., OH/DS, Fort Atkinson, Wis.

- ▶ Averaged 4.47 kills, 4.41 digs and 1.44 blocks per set as a senior in high school

#5 Lynsey Wright, 6-0, Jr., MB, Glen Carbon, Ill.

- ▶ Played for the US Collegiate National Team in summer 2016
- ▶ Hit .300 or better in 40 career matches, over .400 24 times
- ▶ MVC All-Freshman selection in 2014
- ▶ MVC all-tournament pick in 2015
- ▶ MVC Player of the Week on Sept. 12, 2016

#6 Lauren Boone, 6-1, Jr., S, Branson, Mo.

- ▶ Made more than 30 starts on the right side in her career
- ▶ Neared a triple-double with 8 kills, 18 assists and 11 digs against Illinois State as a freshman
- ▶ Hit .230 or better in each of her first two seasons

#7 Laynie Dake, 6-2, Fr., MB, Mount Vernon, Mo.

- ▶ Owns HS records for kills (1,190), blocks (213), hitting percentage (.389) and kill percentage (.517)
- ▶ All-state as a high school junior and senior

#8 Emily Butters, 5-8, So., L, Richmond, Texas

- ▶ Set MSU's freshman record for digs in 2015 with 568, which ranked 5th overall in MSU history
- ▶ Played for the US Collegiate National Team in summer 2016
- ▶ Missouri State's libero for every match of her career
- ▶ MVC all-Freshman selection in 2016

#9 Simone House, 6-3, Sr., MB, Oshkosh, Wis.

- ▶ Ranks 4th in MSU history with .304 attack efficiency
- ▶ Hit .300 or higher in 52 career matches
- ▶ Second-team all-MVC in 2015, all-Freshman in 2013
- ▶ Led MSU in blocking 64 times in 105 career matches
- ▶ Averaged at least 0.87 blocks in each of her four seasons

#10 Aubrey Cheffey, 6-2, Fr., OH, Nixa, Mo.

- ▶ AVCA Under Armour All-America honorable mention as a high school senior
- ▶ First-team all-state selection as a junior and senior
- ▶ MVC Freshman of the Week on Sept. 6, 2016

#11 Ashley Ophoven, So., OH, Ozark, Mo.

- ▶ 278 kills in 2015 ranked 10th all-time among MSU freshmen
- ▶ Reached 100 kills in 9th career match, 2nd-quickest in school history
- ▶ One of 10 freshmen at MSU with 20 or more kills in a match

#12 Caroline Finnell, 6-2, So., RS, Chesterfield, Mo.

- ▶ Redshirted in 2014
- ▶ Averaged 1.22 blocks per set as a high school senior

#13 Gerri Idos, 5-1, Fr., DS, Springfield, Mo.

- ▶ Accumulated more than 900 career digs in high school
- ▶ Averaged 5.9 digs per set as a senior

#14 MacKenzie Irwin, 6-1, So., MB, Joplin, Mo.

- ▶ Started three matches as a freshman
- ▶ Set high school records with 759 career kills and 166 blocks

#15 Tatum Marshall, 5-7, Sr., DS/L, Fayetteville, Ark.

- ▶ Appeared in 118 of a possible 122 matches in her career
- ▶ Eclipsed 250 digs as a sophomore and junior
- ▶ Second on the team in aces each of the last two seasons

#17 Lily Johnson, 5-11, Jr., OH, Wildwood, Mo.

- ▶ Missouri State's only multiple-time All-American as an AVCA honorable selection each of her first two seasons
- ▶ MVC Player of the Year in 2015
- ▶ Seven-time MVC Player of the Week; Only UNI's Molly O'Brien (10), UNI's Kate Galer (8) and Wichita State's Emily Stockman (8) have won the award more times
- ▶ Four-time MVC Scholar-Athlete of the Week
- ▶ First sophomore in MSU history to reach 1,000 career kills
- ▶ 620 kills in 2015 ranked 3rd nationally as the second-best total in MSU history
- ▶ Owns school record with 36 career matches of 10+ kills from October 2014-October 2015; Also has streaks of 34 (2nd - active) and nine (t-10th)
- ▶ Second at Missouri State with 30 career matches of 20+ kills
- ▶ Ranks 3rd in MSU history with 1,514 career kills
- ▶ First MVC player to lead league in kills as a freshman and sophomore
- ▶ Played for the US Collegiate National Team in summer 2016
- ▶ Had 33 kills on Oct. 1, 2016 at Drake, the 6th-best total in school history and most since 1998

#19 Mikaela Mosquera, So., MB, West Chicago, Ill.

- ▶ Helped high school team to 86 wins in four seasons
- ▶ Won the 2014 national championship in club volleyball playing for Sports Performance 18 Red

#21 Paige Perry, Fr., OH/DS, Ozark, Mo.

- ▶ Helped Ozark High to four 30-win seasons and four state semi-final appearances
- ▶ Four-time Academic All-America selection in high school
- ▶ Named to PrepVolleyball.com's Defensive Dandies fourth team following her senior season

#22 Daniele Messa, Fr., S, Bartlett, Ill.

- ▶ Guided St. Francis High to four consecutive state titles and a 109-10 cumulative record
- ▶ Finalist for the Andi Collins Award as a senior, given annually to the nation's top setter
- ▶ First-team all-state choice as a senior
- ▶ MVC Freshman of the Week on Sept. 12 and Oct. 10
- ▶ Had 54 assists and 20 digs on Oct. 1, 2016 at Drake, the 17th 50/20 match in MSU history and first since 1998
- ▶ Ranks third all-time among MSU freshmen in total assists with 808, trailing only Carly Thomas (839 in 2010) and Chenille Bayless (1,469 in 2000)

#23 Cambree Villarreal, So., OH, Amarillo, Texas

- ▶ High school All-American according to both PrepVolleyball and the AVCA
- ▶ Made three starts as a freshman

Updated Career Statistics for Players Active Before 2016

Simone House, 6-3, Sr., MB, Oshkosh, Wis.

Year	M-MS	SP	K	E	Att.	Pct.	Ast.	SA	SE	Dig	BS	BA	KPS	DPS	BPS
2013	17-12	52	86	21	191	.340	2	12	12	27	6	43	1.65	0.52	0.94
2014	29-28	113	155	49	381	.278	2	1	3	27	7	97	1.37	0.24	0.92
2015	35-35	133	242	82	580	.310	5	0	0	23	21	111	1.82	0.17	0.99
2016	23-23	87	176	46	432	.301	5	0	0	24	16	60	2.02	0.28	0.87
Total	104-98	385	659	178	1584	.304	14	13	15	101	50	311	1.71	0.26	0.94

Tatum Marshall, 5-7, Sr., DS/L, Fayetteville, Ark.

Year	M-MS	SP	K	E	Att.	Pct.	Ast.	SA	SE	Dig	BS	BA	KPS	DPS	BPS
2013	29-6	90	2	1	7	.143	34	15	14	152	0	0	0.02	1.69	0.00
2014	32-20	122	3	1	13	.154	52	29	35	282	0	0	0.02	2.31	0.00
2015	35-13	131	0	1	3	-.333	31	32	32	263	0	0	0.00	2.01	0.00
2016	22-6	73	4	1	8	.375	5	13	23	149	0	0	0.05	1.84	0.00
Total	118-45	424	9	4	31	.161	122	89	104	846	0	0	0.02	2.00	0.00

Lauren Boone, 6-1, Jr., S, Branson, Mo.

Year	M-MS	SP	K	E	Att.	Pct.	Ast.	SA	SE	Dig	BS	BA	KPS	DPS	BPS
2014	23-10	55	58	15	170	.253	36	0	0	26	0	18	1.05	0.47	0.33
2015	29-13	91	99	28	309	.230	17	0	1	34	3	41	1.09	0.37	0.48
2016	20-14	68	59	25	191	.178	190	0	4	68	1	14	0.87	1.00	0.22
Total	72-37	214	216	68	670	.221	243	0	5	128	4	73	1.01	0.60	0.36

Brianne Dixon, 5-7, Jr., DS, Springfield, Mo.

Year	M-MS	SP	K	E	Att.	Pct.	Ast.	SA	SE	Dig	BS	BA	KPS	DPS	BPS
2014	18-0	25	0	0	0	.000	0	0	5	17	0	0	0.00	0.68	0.00
2015	34-6	117	0	0	0	.000	11	6	11	135	0	0	0.00	1.15	0.00
2016	23-20	88	2	0	5	.400	8	7	13	181	0	0	0.02	2.06	0.00
Total	75-26	230	2	0	5	.400	19	13	29	333	0	0	0.01	1.45	0.00

Lily Johnson, 5-11, Jr., OH, Wildwood, Mo.

Year	M-MS	SP	K	E	Att.	Pct.	Ast.	SA	SE	Dig	BS	BA	KPS	DPS	BPS
2014	32-32	124	495	210	1442	.198	23	39	62	312	3	42	3.99	2.52	0.36
2015	35-35	135	620	212	1726	.236	28	40	54	398	5	43	4.59	2.95	0.36
2016	23-23	89	399	136	1117	.235	17	32	34	263	5	25	4.48	2.96	0.35
Total	90-90	348	1514	558	4285	.223	68	111	150	973	14	110	4.35	2.80	0.36

Lynsey Wright, 6-0, Jr., MB, Glen Carbon, Ill.

Year	M-MS	SP	K	E	Att.	Pct.	Ast.	SA	SE	Dig	BS	BA	KPS	DPS	BPS
2014	29-27	111	246	94	522	.291	3	10	43	57	5	64	2.22	0.51	0.62
2015	33-29	127	350	135	769	.280	5	14	34	50	7	83	2.76	0.39	0.71
2016	23-21	83	218	86	466	.283	3	11	21	36	7	47	2.63	0.43	0.65
Total	85-77	321	814	315	1757	.284	11	35	98	143	19	194	2.54	0.45	0.66

Emily Butters, 5-8, So., L, Richmond, Texas

Year	M-MS	SP	K	E	Att.	Pct.	Ast.	SA	SE	Dig	BS	BA	KPS	DPS	BPS
2015	35-0	135	0	1	3	-.333	92	15	23	568	0	0	0.00	4.21	0.00
2016	23-0	89	1	1	10	.000	60	17	22	361	0	0	0.01	4.06	0.00
Total	58-0	224	1	2	13	-.077	152	32	45	929	0	0	0.00	4.15	0.00

Caroline Finnell, 6-2, So., RS, Chesterfield, Mo.

Year	M-MS	SP	K	E	Att.	Pct.	Ast.	SA	SE	Dig	BS	BA	KPS	DPS	BPS
2015	14-1	19	14	2	26	.462	0	0	0	5	0	1	0.74	0.26	0.05
2016	6-0	11	8	2	15	.400	0	0	0	2	0	2	0.73	0.18	0.18
Total	20-1	30	22	4	41	.439	0	0	0	7	0	3	0.73	0.23	0.10

MacKenzie Irwin, 6-1, So., MB, Joplin, Mo.

Year	M-MS	SP	K	E	Att.	Pct.	Ast.	SA	SE	Dig	BS	BA	KPS	DPS	BPS
2015	13-3	27	15	8	42	.167	0	4	4	2	0	8	0.56	0.07	0.30
2016	14-1	29	21	6	42	.357	1	0	1	4	0	11	0.72	0.14	0.38
Total	27-4	56	36	14	84	.262	1	4	5	6	0	19	0.64	0.11	0.34

Mikaela Mosquera, So., MB, West Chicago, Ill.

Year	M-MS	SP	K	E	Att.	Pct.	Ast.	SA	SE	Dig	BS	BA	KPS	DPS	BPS
2015	9-0	10	7	4	19	.158	0	0	0	1	0	1	0.70	0.10	0.10
2016	12-2	24	16	12	44	.091	0	0	0	6	0	9	0.67	0.25	0.38
Total	21-2	34	23	16	63	.111	0	0	0	7	0	10	0.68	0.21	0.29

Ashley Ophoven, So., OH, Ozark, Mo.

Year	M-MS	SP	K	E	Att.	Pct.	Ast.	SA	SE	Dig	BS	BA	KPS	DPS	BPS
2015	34-17	121	278	150	751	.170	6	0	1	58	4	26	2.30	0.48	0.25
2016	22-2	52	98	66	278	.115	0	0	1	19	1	10	1.88	0.37	0.21
Total	56-19	173	376	216	1029	.155	6	0	2	77	5	36	2.17	0.45	0.24

Cambree Villarreal, So., OH, Amarillo, Texas

Year	M-MS	SP	K	E	Att.	Pct.	Ast.	SA	SE	Dig	BS	BA	KPS	DPS	BPS
2015	17-3	38	41	24	153	.111	2	0	0	10	0	8	1.08	0.26	0.21
2016	18-0	45	67	22	228	.197	0	0	1	18	1	8	1.49	0.40	0.20
Total	35-3	83	108	46	381	.163	2	0	1	28	1	16	1.30	0.34	0.20

2016 Overall Season Statistics (16-7, 7-2 MVC)

2016 Missouri State Volleyball Missouri State Combined Team Statistics (as of Oct 15, 2016) All matches

Overall record: 16-7 Conf: 7-2 Home: 7-2 Away: 6-2 Neutral: 3-3

#	Player	sp	Attack				pct	Set		Serve			re	Dig		Blocking					points	
			k	k/s	e	ta		a	a/s	sa	se	sa/s		dig	dig/s	bs	ba	total	blk/s	be		bhe
17	Johnson,Lily	89	399	4.48	136	1117	.235	17	0.19	32	34	0.36	18	263	2.96	6	25	31	0.35	2	1	449.5
5	Wright,Lynsey	83	218	2.63	86	466	.283	3	0.04	11	21	0.13	1	36	0.43	7	47	54	0.65	8	0	259.5
9	House,Simone	87	176	2.02	46	432	.301	5	0.06	0	0	0.00	3	24	0.28	16	60	76	0.87	4	0	222.0
11	Ophoven,Ashley	52	98	1.88	66	278	.115	0	0.00	0	1	0.00	0	19	0.37	1	10	11	0.21	2	0	104.0
10	Cheffey,Aubrey	49	74	1.51	35	210	.186	5	0.10	0	0	0.00	0	14	0.29	0	22	22	0.45	0	0	85.0
23	Villarreal,Cambree	45	67	1.49	22	228	.197	0	0.00	0	1	0.00	1	18	0.40	1	8	9	0.20	0	0	72.0
6	Boone,Lauren	68	59	0.87	25	191	.178	190	2.79	0	4	0.00	0	68	1.00	1	14	15	0.22	2	10	67.0
14	Irwin,MacKenzie	29	21	0.72	6	42	.357	1	0.03	0	1	0.00	0	4	0.14	0	11	11	0.38	1	0	26.5
22	Messa,Daniele	84	20	0.24	5	64	.234	808	9.62	10	21	0.12	0	199	2.37	0	20	20	0.24	4	15	40.0
19	Mosquera,Mikaela	24	16	0.67	12	44	.091	0	0.00	0	0	0.00	2	6	0.25	0	9	9	0.38	0	0	20.5
7	Dake,Laynie	12	9	0.75	5	19	.211	0	0.00	0	0	0.00	0	1	0.08	0	4	4	0.33	1	0	11.0
12	Finnell,Caroline	11	8	0.73	2	15	.400	0	0.00	0	0	0.00	0	2	0.18	0	2	2	0.18	0	0	9.0
15	Marshall,Tatum	81	4	0.05	1	8	.375	5	0.06	13	23	0.16	2	149	1.84	0	0	0	0.00	0	0	17.0
1	Dixon,Brianne	88	2	0.02	0	5	.400	8	0.09	7	13	0.08	13	181	2.06	0	0	0	0.00	0	0	9.0
8	Butters,Emily	89	1	0.01	1	10	.000	60	0.67	17	22	0.19	20	361	4.06	0	0	0	0.00	0	0	18.0
13	Idos,Gerri	47	0	0.00	0	0	.000	2	0.04	4	5	0.09	0	16	0.34	0	0	0	0.00	0	0	4.0
21	Perry,Paige	14	0	0.00	1	6	-.167	1	0.07	1	5	0.07	0	10	0.71	0	0	0	0.00	0	0	1.0
2	Hanson,Julia	8	0	0.00	1	1	-1.000	0	0.00	3	3	0.38	0	6	0.75	0	0	0	0.00	0	0	3.0
MISSOURI STATE		89	1172	13.17	450	3136	.230	1105	12.42	98	154	1.10	67	1377	15.47	32	232	148.0	1.66	24	26	1418.0
Opponents		89	1065	11.97	471	3131	.190	987	11.09	67	157	0.75	98	1322	14.85	30	275	167.5	1.88	40	21	1299.5

Team Statistics	MSU	OPP
ATTACK		
Kills	1172	1065
Errors	450	471
Total Attacks	3136	3131
Attack Pct	.230	.190
Kills/Set	13.2	12.0
SET		
Assists	1105	987
Assists/Set	12.4	11.1
SERVE		
Aces	98	67
Errors	154	157
Aces/Set	1.1	0.8
SERVE RECEPTIONS		
Errors	67	98
Errors/Set	0.8	1.1
DEFENSE		
Digs	1377	1322
Digs/Set	15.5	14.9
BLOCKING		
Block Solo	32	30
Block Assist	232	275
Total Blocks	148.0	167.5
Blocks/Set	1.7	1.9
Block Errors	24	40
Ball handling errors	26	21
ATTENDANCE		
Total	7297	13634
Dates/Avg Per Date	9/811	8/1704
Neutral site #/Avg	6/0	-
Current win streak	7	-
Home win streak	3	-

Date	Opponent	Score	Score by set	Att.
08-26-16	vs Xavier	L 2-3	25-18,25-23,23-25,17-25,14-16	0
08-27-16	vs Arkansas	w 3-0	25-16,25-19,29-27	0
08-27-16	at #14 Illinois	w 3-2	25-22,14-25,25-22,15-25,15-10	2544
09-01-16	at #15 Hawaii	L 0-3	16-25,22-25,22-25	5604
09-02-16	vs #8 UCLA	L 1-3	25-21,16-25,18-25,15-25	0
09-03-16	vs Pacific	w 3-0	25-14,25-23,25-19	0
09-08-16	MCNEESE STATE	w 3-0	25-17,25-17,25-15	934
09-09-16	#12 OHIO STATE	w 3-2	21-25,25-23,25-21,22-25,15-12	1017
09-10-16	WESTERN ILLINOIS	w 3-0	25-9,25-15,25-18	515
09-10-16	IUPUI	w 3-1	25-14,25-23,18-25,25-20	803
09-13-16	at Arkansas State	w 3-1	25-23,19-25,25-22,25-20	287
09-16-16	vs Milwaukee	w 3-0	25-15,25-20,26-24	0
09-17-16	vs Iowa State	L 0-3	12-25,21-25,22-25	0
09-17-16	at Marquette	L 1-3	25-21,18-25,13-25,23-25	548
*09-23-16	WICHITA STATE	L 2-3	24-26,25-20,12-25,25-21,10-15	1141
*09-26-16	SOUTHERN ILLINOIS	L 2-3	25-13,16-25,25-23,19-25,13-15	902
*09-30-16	at UNI	w 3-2	26-24,25-21,20-25,19-25,15-13	3155
*10-01-16	at Drake	w 3-2	23-25,25-18,25-17,18-25,15-10	442
*10-07-16	BRADLEY	w 3-0	25-14,25-19,25-17	878
*10-08-16	LOYOLA	w 3-0	25-14,25-16,25-14	606
*10-10-16	EVANSVILLE	w 3-0	25-10,25-12,25-15	501
*10-14-16	at Illinois State	w 3-2	20-25,25-19,18-25,25-20,15-11	821
*10-15-16	at Indiana State	w 3-0	25-18,25-20,25-15	233

Record in 3-set matches:9-2 • Record in 4-set matches:2-2 • Record in 5-set matches:5-3

2016 MVC Statistics (16-7, 7-2 MVC)

2016 Missouri State Volleyball Missouri State Combined Team Statistics (as of Oct 15, 2016) Conference matches

Overall record: 7-2 Conf: 7-2 Home: 3-2 Away: 4-0 Neutral: 0-0

#	Player	sp	Attack				pct	Set		Serve			re	Dig		Blocking					points	
			k	k/s	e	ta		a	a/s	sa	se	sa/s		dig	dig/s	bs	ba	total	blk/s	be		bhe
17	Johnson,Lily	37	183	4.95	55	485	.264	9	0.24	14	10	0.38	8	90	2.43	5	14	19	0.51	0	1	209.0
5	Wright,Lynsey	33	84	2.55	31	166	.319	2	0.06	4	9	0.12	0	12	0.36	4	18	22	0.67	3	0	101.0
9	House,Simone	37	74	2.00	21	182	.291	1	0.03	0	0	0.00	0	12	0.32	7	20	27	0.73	4	0	91.0
6	Boone,Lauren	35	43	1.23	16	130	.208	19	0.54	0	0	0.00	0	20	0.57	0	6	6	0.17	1	1	46.0
23	Villarreal,Cambree	19	33	1.74	6	84	.321	0	0.00	0	0	0.00	1	4	0.21	0	3	3	0.16	0	0	34.5
10	Cheffey,Aubrey	23	31	1.35	14	86	.198	3	0.13	0	0	0.00	0	4	0.17	0	4	4	0.17	0	0	33.0
11	Ophoven,Ashley	18	18	1.00	16	51	.039	0	0.00	0	0	0.00	0	6	0.33	0	3	3	0.17	0	0	19.5
22	Messa,Daniele	37	15	0.41	5	45	.222	395	10.68	4	9	0.11	0	105	2.84	0	12	12	0.32	3	9	25.0
14	Irwin,MacKenzie	11	8	0.73	3	15	.333	0	0.00	0	1	0.00	0	1	0.09	0	5	5	0.45	1	0	10.5
19	Mosquera,Mikaela	9	6	0.67	3	15	.200	0	0.00	0	0	0.00	1	5	0.56	0	1	1	0.11	0	0	6.5
15	Marshall,Tatum	34	4	0.12	1	7	.429	3	0.09	7	11	0.21	1	61	1.79	0	0	0	0.00	0	0	11.0
12	Finnell,Caroline	4	3	0.75	0	5	.600	0	0.00	0	0	0.00	0	0	0.00	0	0	0	0.00	0	0	3.0
8	Butters,Emily	37	1	0.03	1	4	.000	33	0.89	6	9	0.16	9	146	3.95	0	0	0	0.00	0	0	7.0
21	Perry,Paige	6	0	0.00	0	0	.000	0	0.00	0	1	0.00	0	2	0.33	0	0	0	0.00	0	0	0.0
1	Dixon,Brianne	36	0	0.00	0	2	.000	5	0.14	2	3	0.06	5	77	2.14	0	0	0	0.00	0	0	2.0
2	Hanson,Julia	8	0	0.00	1	1	-1.000	0	0.00	3	3	0.38	0	6	0.75	0	0	0	0.00	0	0	3.0
13	Idos,Gerri	24	0	0.00	0	0	.000	2	0.08	0	2	0.00	0	11	0.46	0	0	0	0.00	0	0	0.0
MISSOURI STATE		37	503	13.59	173	1278	.258	472	12.76	40	58	1.08	27	562	15.19	16	86	59.0	1.59	12	11	602.0
Opponents		37	415	11.22	195	1270	.173	377	10.19	27	49	0.73	40	513	13.86	10	88	54.0	1.46	10	7	496.0

Team Statistics	MSU	OPP
ATTACK		
Kills	503	415
Errors	173	195
Total Attacks	1278	1270
Attack Pct	.258	.173
Kills/Set	13.6	11.2
SET		
Assists	472	377
Assists/Set	12.8	10.2
SERVE		
Aces	40	27
Errors	58	49
Aces/Set	1.1	0.7
SERVE RECEPTIONS		
Errors	27	40
Errors/Set	0.7	1.1
DEFENSE		
Digs	562	513
Digs/Set	15.2	13.9
BLOCKING		
Block Solo	16	10
Block Assist	86	88
Total Blocks	59.0	54.0
Blocks/Set	1.6	1.5
Block Errors	12	10
Ball handling errors	11	7
ATTENDANCE		
Total	4028	4651
Dates/Avg Per Date	5/806	4/1163
Neutral site #/Avg	0/0	-
Current win streak	7	-
Home win streak	3	-

Date	Opponent	Score	Score by set	Att.
*09-23-16	WICHITA STATE	L 2-3	24-26,25-20,12-25,25-21,10-15	1141
*09-26-16	SOUTHERN ILLINOIS	L 2-3	25-13,16-25,25-23,19-25,13-15	902
*09-30-16	at UNI	w 3-2	26-24,25-21,20-25,19-25,15-13	3155
*10-01-16	at Drake	w 3-2	23-25,25-18,25-17,18-25,15-10	442
*10-07-16	BRADLEY	w 3-0	25-14,25-19,25-17	878
*10-08-16	LOYOLA	w 3-0	25-14,25-16,25-14	606
*10-10-16	EVANSVILLE	w 3-0	25-10,25-12,25-15	501
*10-14-16	at Illinois State	w 3-2	20-25,25-19,18-25,25-20,15-11	821
*10-15-16	at Indiana State	w 3-0	25-18,25-20,25-15	233

Record in 3-set matches:4-0 • Record in 4-set matches:0-0 • Record in 5-set matches:3-2

TV/Radio Roster



#1 Brianne Dixon
Jr. • DS • Springfield, Mo.
Kickapoo High



#2 Julia Hanson
Fr. • OH/DS • Fort Atkinson, Wis.
Fort Atkinson High



#5 Lynsey Wright
Jr. • MB • Glen Carbon, Ill.
Edwardsville High



#6 Lauren Boone
Jr. • S • Branson, Mo.
Branson High



#7 Laynie Dake
Fr. • MB • Mount Vernon, Mo.
Mount Vernon High



#8 Emily Butters
So. • L • Richmond, Texas
Travis High



#9 Simone House
Sr. • MB • Oshkosh, Wis.
North High



#10 Aubrey Cheffey
Fr. • OH • Nixa, Mo.
Nixa High



#11 Ashley Ophoven
So. • OH • Ozark, Mo.
Ozark High



#12 Caroline Finnell
So. • RS • Chesterfield, Mo.
Marquette High



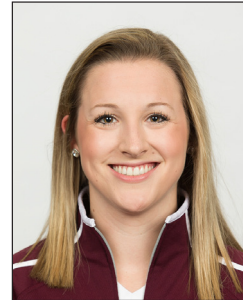
#13 Gerri Idos
Fr. • DS • Springfield, Mo.
Kickapoo High



#14 MacKenzie Irwin
So. • MB • Joplin, Mo.
Carl Junction High



#15 Tatum Marshall
Sr. • DS/L • Fayetteville, Ark.
Fayetteville High



#17 Lily Johnson
Jr. • OH • Wildwood, Mo.
Lafayette High



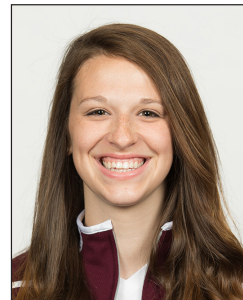
#19 Mikaela Mosquera
So. • MB • West Chicago, Ill.
St. Charles East High



#21 Paige Perry
Fr. • OH/DS • Ozark, Mo.
Ozark High



#22 Daniele Messa
Fr. • S • Bartlett, Ill.
St. Francis High



#23 Cambree Villarreal
So. • OH • Amarillo, Texas
Amarillo High



Melissa Stokes
Head Coach, 21st season



Jake Barreau
Assistant Coach, 3rd season



Kevin Dunn
Assistant Coach, 2nd season



Karen Rivatto
Graduate Assistant, 2nd season